

Newsletter of the  
Crawford Park District  
Winter 2023-24



# “Land”ing Bigtime!

With assistance from Clean Ohio funds, CPD funds, and land donations, the Crawford Park District is pleased to announce the acquisition of three properties that will be developed for public use. Two of the three properties – which abut each other – were acquired from Northside Acres, LLC and the Crawford County Conservation League; it will be named “Carpenter’s Bottom Natural Area”. The third property was acquired from Joy Etter-Link, et al; it will be named “Kurtz-Etter Wildlife Area”. These properties constitute the largest land acquisitions in the history of the CPD: Kurtz-Etter Wildlife Area is 78.5 acres and Carpenter’s Bottom Natural Area is 72.4 acres (43 from Northside Acres and 27.4 from the CCCL).

## Carpenter’s Bottom Natural Area



Carpenter’s Bottom Natural Area (3225 SR 98, Bucyrus) is located along the banks of the Sandusky River between US 30 and the railroad tracks on SR 98. Purchased from the Crawford County Conservation League and Northside Acres (owned by brothers Raymond, Richard, and James Carpenter who also donated some land), Carpenter’s Bottom has a storied history. In the mid-1800s, the property was acquired by Crawford County’s first sheriff, Hugh McCracken. The former sheriff’s daughter, Lizzy, was next in line of ownership; it is with this ownership that the property received its first unofficial designation: Lizzy’s Bottom. In the early 1900s, the Carpenter brothers’ father married into the McCracken family. Through this union, their father was able to acquire the land in 1931, thus officially becoming property of the Carpenters. Lizzy’s Bottom eventually became known as “Carpenter’s Bottom”.

Carpenter’s Bottom was a known hangout for hobos. Richard recalls visiting the hobo camps in the 1950s. It is

presumed that it attracted these “supertramps” due to the natural spring on the property, located close to the railroad tracks. The property was also used as a thoroughfare for local livestock producers who would herd their animals along the Sandusky River to the local stockyard. As the decades passed, enter Richard’s father-in-law, Mack Wade. As a transplant from the hills of Tennessee, Mack had a great fondness for the property held within his daughter’s family – it reminded him of his home in the hills. Mack was instrumental in developing the trails that currently bisect the property. Over the course of 12 years, Mack constructed, maintained, and widened the walkways, even adding stone and culverts where needed.

As the Carpenter and Wade families enjoyed their woodland oasis, it became clear that places such as Carpenter’s Bottom would be an asset to the area. Richard took this idea and rolled with it. It became Richard’s vision to establish a system of parks and preserves within Crawford County that the public could utilize, much the same as Richard’s family enjoyed Carpenter’s Bottom. It is within this property, Carpenter’s Bottom Natural Area, that the seed of your Crawford Park District sprouted. With much gratitude, we humbly accept this property into the CPD fold.





As the steps to acquire the Carpenter property were underway, an adjacent property also became available. The Conservation League property was split in half with the construction of the US 30 bypass. This orphaned parcel was utilized by Conservation League members for hunting. As demographics shifted and changed, the property became more of a liability than an asset, and it was determined to sell the parcel. Being virtually land-locked, it was a hard sell for any potential buyer. It became clear that if the CPD were to purchase the Carpenter property, adding the Conservation League property to the funding request would make the most sense. The CPD thanks the Crawford County Conservation League for working with us to make their parcel a part of Carpenter's Bottom Natural Area.



While Carpenter's Bottom has a historical connection to the CPD, the natural history of the site is also fantastic. Boasting protection for the Sandusky River, it also contains numerous vernal pools, of which the largest can be seen from SR 98. Ohio Buckeye and Pawpaw trees are numerous in the river bottom, along with very large Eastern Cottonwood and American Sycamore trees. It is a birding hotspot during migration and has a very diverse display of spring wildflowers, particularly Wild Geraniums. Currently, the natural area is open to the public for hiking and other passive nature exploration. Future development will include constructing trails into the Conservation League parcel.

**Kurt-Etter Wildlife Area**



Kurtz-Etter Wildlife Area (1079 Poe Rd., Bucyrus) is located in the southcentral part of Crawford County. Joy Etter-Link approached the CPD regarding a 20-acre land donation of a sedge meadow on her mother's property. After further discussions, it was decided the CPD would purchase the entire property, utilizing the land donation as the local match.

The property originally found its way into the Etter family when Joy's great-grandparents, Harry and Carrie Kurtz, purchased the property. During the Kurtz ownership, much of the land was devoted to agriculture. Around 1970, Gregory and Judy Etter purchased the property from Judy's grandparents. Local residents may recall the former Etter's House of Flowers. As a supplement to the flower business, Gregory, who was active with the Boy Scouts of America, had local scouts plant evergreens for landscaping and Christmas trees as their troop's fundraiser. There were also fruit orchards planted near the pond and south of the driveway.

The Etters always had an affinity for natural history. In the 1990s and 2000s, songbird research was being conducted in Crawford County by Ohio State University. When approached by researchers to include the Etter property in the study sites, of course the answer was "yes!" There were many papers written over the years on the data that was collected and turning to the "acknowledgment" sections of some of those papers, one will find Judy Etter's name listed. Not only did the Etters welcome the researchers, but interns would stay at the Etter residence for weeks at a time instead of driving back and forth to Columbus every day. Imagine that occurring today!

Currently, the tree farm portion of the property provides very thick cover for wildlife, and there are only a few trees remaining from the orchards. The north end of the woodland is mixed hardwoods with rolling ravines. A large grove of Sassafras trees occupies one of the ridges. The Olentangy River winds through the southeast portion of the property, and the sedge meadow lies along Poe Road and Monnett-Chapel Road. While plans are still in the very early stages, converting the former agricultural acreage to grasslands and/or wetlands is being explored. The house is in a state of disrepair and will be razed at a future date. While the property is currently closed to the public, future usage will allow for public hunting.

The Olentangy River winds through the southeast portion of the property, and the sedge meadow lies along Poe Road and Monnett-Chapel Road. While plans are still in the very early stages, converting the former agricultural acreage to grasslands and/or wetlands is being explored. The house is in a state of disrepair and will be razed at a future date. While the property is currently closed to the public, future usage will allow for public hunting.

The Crawford Park District extends a huge "Thank You!" to the Etter-Link Family, Carpenter Family, and the Crawford County Conservation League for working with us to preserve these tracts in perpetuity for future generations to enjoy the rich natural history that Crawford County has offer.

# PROGRAMS

All programs are free of charge, unless otherwise noted. For more information or questions about programs, call 419-683-9000 or visit [www.crawfordparkdistrict.org](http://www.crawfordparkdistrict.org)

## December

### **Feeding Day**

**Monday, December 4 4:30pm Lowe-Volk Park**

Lizards, turtles, bugs, snakes, bunnies, oh my! We have lots of mouths to feed here at the Nature Center! Come by to help prepare diets and feed the critters. But that's not all! Captive animals require enrichment in their lives to relieve stress and boredom. Make fun puzzles, toys, and decorations for them as well!

### **Little Explorers: Bones**

**Tuesday, December 5 5pm Lowe-Volk Park**



Little Explorers is an interactive program for young children, ages 0-5. Activities focus on stimulating infants' senses

and developing toddlers' and preschoolers' fine motor skills. This month we'll explore bones! We will be inside this month.

### **Homeschool in Nature: Telemetry**

**Thurs, December 7 10am & 2pm Lowe-Volk Park**

Tracking all animals... well maybe not ALL the animals. This month we will learn how and why researchers use telemetry to track animals. Students will each get a chance to do some tracking on their own. Call the Park District at 419-683-9000 to register your 5-12-year-old.



### **Holiday Decorations**

**Saturday, December 9 11am Lowe-Volk Park**



Brighten up your house by making a holiday decoration with pine boughs and cones! We will provide different evergreen cones, pine boughs, ribbon, glue guns, wreath forms, and

miscellaneous items from nature. If you have other items you wish to add to your wreath or a certain ribbon you prefer, bring those with you!

### **Snowy Owls**

**Tuesday, December 12 6pm Virtual**

Snowy Owls often migrate from their summer homes in the Arctic to Ohio during winter months, even to Crawford County! Join Chelsea for an interactive presentation all



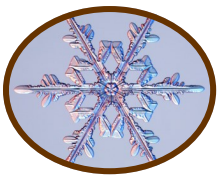
about Snowy Owls, learning their natural history, and the best places to find one this winter. Call the CPD office to register and receive a Zoom link.

### **Movie in the Park**

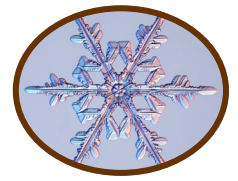
**Friday, December 15 6pm Lowe-Volk Park**

Put on your pajamas, grab a blanket, and head over to the Nature Center for a family-favorite holiday movie! There will be popcorn, hot chocolate, and themed activities to go with the movie. We might even get to snack on all four food groups: Candy, Candy Canes, Candy Corn, and Syrup!





# PROGRAMS



## December/January

### Rockin' Reindeer

**Monday, December 18 5:30pm Lowe-Volk Park**



We love turning nature into works of art. Using river rocks, sticks, paint, and glue, we're going to make reindeer in the stable. All ages are welcome!

### Audubon Christmas Bird Count

**Friday, December 29 7:30am**

**Meet at Lowe-Volk Park**



The classic example of citizen science, the Audubon Christmas Bird Count collects data on bird populations throughout North America. Field counters and bird feeder counters are welcome! If you'd like to participate and would like more information, contact the CPD office at 419-683-9000.

### Face to Face: Lizards

**Saturday, December 30 11am Lowe-Volk Park**

Join Chelsea to meet the Nature Center's lizards!

Simon, a bearded dragon, will be the star of the show, and kids will have the opportunity to hold and feed him. We will also learn about one of Ohio's native lizard species, the Common Five-lined Skink, and see one up close!



### Feeding Day

**Monday, January 1 4:30pm Lowe-Volk Park**

Lizards, turtles, bugs, snakes, bunnies, oh my! We have lots of mouths to feed here at the Nature Center! Come by to help prepare diets and feed the critters. But that's not all! Captive animals require enrichment in

their lives to relieve stress and boredom. Make fun puzzles, toys, and decorations for them as well!

### Little Explorers: Snow

**Tuesday, January 2 5pm Lowe-Volk Park**

Little Explorers is an interactive program for young children, ages 0-5. Activities focus on stimulating infants' senses and developing toddlers' and preschoolers' fine motor skills. This month we'll explore cold, fluffy, flaky snow! We will be inside and outside (if there's snow) this month.

### Homeschool in Nature: Wildlife Timeline

**Thurs, January 4 10am & 2pm Lowe-Volk Park**

Over the past two centuries, Ohio's landscape and wildlife have changed drastically. This month we will step back in time to see which animals called Ohio home. Call the Park District at 419-683-9000 to register your 5-12-year-old.



### Tracks in the Trails

**Thursday, January 4 4pm Lowe-Volk Park**

Which animals have been using our park? Join Chelsea to hike the trails in search of animal tracks in the mud or snow. We will practice



identifying which animal the tracks we find belong to!





# PROGRAMS



## January/February

### **Frozen Critters**

**Wednesday, January 10 5:30pm Lowe-Volk Park**



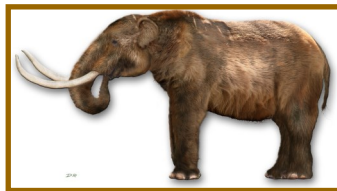
Ohio winters can be harsh with temperatures falling below freezing, but animals have different ways to survive in this environment. One peculiar adaptation is how an animal can be nearly frozen through, but when the temperatures rise, they “come back to life”. Come out to

learn about these animals and even meet a few species that are known to be “frozen critters”.

### **The Ice Age in Crawford County**

**Tuesday, January 16 6pm Virtual**

Over 10,000 years ago, Ohio was a very different landscape. Huge mammals and even larger sheets of ice would have been dominant in Crawford County. Join Josh for this virtual presentation that will delve into our “cool” history that not only shaped the land we use today but has provided underground surprises in the form of ancient bones. Call the CPD office to register and receive a Zoom link.



### **Face to Face: Axolotls**

**Saturday, January 20 11am Lowe-Volk Park**

Join Chelsea to meet two of the most popular animals residing in our Nature Center: axolotls! We will learn what makes axolotls so unique and why they are endangered in the wild. Attendees will also be able to touch or hold an axolotl.



### **Feeding Day**

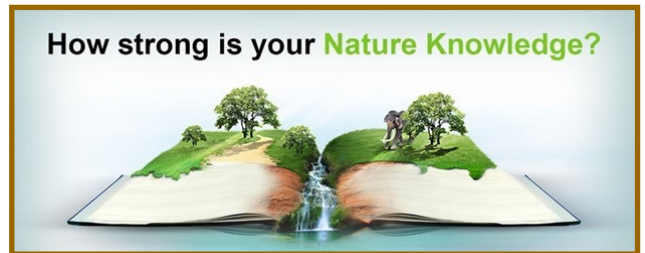
**Monday, January 22 4:30pm Lowe-Volk Park**

Lizards, turtles, bugs, snakes, bunnies, oh my! We have lots of mouths to feed here at the Nature Center! Come by to help prepare diets and feed the critters. But that’s not all! Captive animals require enrichment in their lives to relieve stress and boredom. Make fun puzzles, toys, and decorations for them as well!

### **Homeschool in Nature: Nature Knowledge**

**Thurs, February 1 10am & 2pm Lowe-Volk Park**

This month we are going to see which team has the most nature knowledge. Some questions will be from previous classes, and some are just general facts. The winning team will get to lead our hike! Call the Park District at 419-683-9000 to register your 5–12-year-old.



### **Surreal Snapshots Photography Exhibit**

**Sat, February 3- Sat, March 2 Lowe-Volk Park**

#### **Surreal Snapshots:**

#### **Patience and the Power of Photography**

**Saturday, February 3 11am Lowe-Volk Park**

Dr. Brad Imhoff spends much of his free time behind a camera capturing Ohio’s wildlife, especially birds. His favorite time in the field is spent seeking out local rarities and photographing waterfowl and shorebirds. His bird photography has been featured in textbooks, field guides, magazines, calendars, and a variety of other media. Join Dr. Imhoff as he opens his photography exhibit with an exceptional visual presentation, showcasing surreal snapshots and stories of our natural world.



# PROGRAMS



## February

### **Ohio Birding**

**Saturday, February 3 1pm Lowe-Volk Park**

Do you enjoy watching and feeding birds? Come and learn about the common birds of Ohio. Learn how to identify birds, use binoculars and



spotting scopes, and set up bird feeders and bird houses. We will look at Ohio nature guides, the Ohio Division of Wildlife website, and apps on your phone that can help you identify birds by their appearance and calls. We will also learn about our nation's largest spring warbler migration that takes place at Ohio's Magee Marsh.

### **Feeding Day**

**Monday, February 5 4:30pm Lowe-Volk Park**

Lizards, turtles, bugs, snakes, bunnies, oh my! We have lots of mouths to feed here at the Nature Center! Come by to help prepare diets and feed the critters. But that's not all! Captive animals require enrichment in their lives to relieve stress and boredom. Make fun puzzles, toys, and decorations for them as well!

### **Little Explorers: Feathers**

**Tuesday, February 6 5pm Lowe-Volk Park**

Little Explorers is an interactive program for young children, ages 0-5.



Activities focus on stimulating infants' senses and developing toddlers' and preschoolers' fine motor skills. This month we'll explore feathers!

### **Rock Tumbling**

**Sat, Feb. 10 & 24 10 am - 12 pm Lowe-Volk Park**

You will learn about rock tumbling equipment and the process of tumbling rocks. We will start a rock tumbler with rough stone and go through all 4 polishing stages

to create beautiful, polished rocks.

Volunteer Bryan Summer will lead this rockin' program! The first session will start the rough



tumbling process; session 2 will finish the polish tumble. A one-hour multimedia lesson will be part of this hands-on activity. Please plan on attending both sessions. Call the Park District at 419.683.9000 to register. Walk-ins are still welcome.

### **Explore Carpenter's Bottom**

**Sat, Feb. 10 1pm Carpenter's Bottom Natural Area**

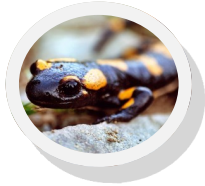
One of the newest park properties is open for hikers! Join Josh to explore Carpenter's Bottom Natural Area, which also includes a parcel from the Conservation League. These two properties, situated along the banks of the Sandusky River, comprise the largest land acquisition in CPD history! This program will venture established trails but will include some "off-trail" hiking. Put on those hiking shoes, and come explore your newest park! All ages welcome.

### **Face to Face: Snakes**

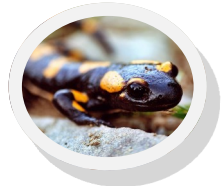
**Saturday, February 17 11am Lowe-Volk Park**

Come meet the snake ambassadors of the Nature Center up close! There will be opportunities to touch and hold a Cornsnake and an Eastern Milksnake, and we will learn all about the amazing adaptations that snakes have!





# PROGRAMS



## February

### **Amphibians of Vernal Pools**

**Tuesday, February 20 6pm Virtual**

While vernal pools host a variety of life, amphibians are considered the face of these unique habitats. Salamanders and frogs need



these temporary bodies of water for egg deposition. Join Josh for this virtual presentation that will explore their “slimy” life from egg to adult. Call the CPD office to register and receive a Zoom link.

### **Snow Insects**

**Sunday, February 25 2pm Lowe-Volk Park**

Some insects are most active on warm, late winter days on top of the snow. Join Chelsea to discover which insects are active in winter and why they are

most comfortable in the cold. This program will include an indoor presentation, concluding with a hike down to the Sandusky River to search for snow insects. If we are lucky, we may find the elusive Snow Scorpionfly! The date is subject to change based on weather conditions, so please check our website or Facebook page for updates.

### **Nature’s Best Leapers**

**Wed, February 28 5:30pm Lowe-Volk Park**

Every four years we have leap year! Celebrating a day early, come out to learn about some of the best leapers in nature. We will also have a contest to see who the best leaper of the night is! This program is designed for children up to 5<sup>th</sup> grade.



## **Virtual Programs**

The CPD will be offering a new programming option this winter: virtual programs. While “virtual” may seem passé since the pandemic is well behind us, virtual programming allows participants the luxury to “attend” the program from the comfort of their own home, from anywhere in the world. These virtual programs will also be recorded and uploaded to our website and other social media outlets so you can watch the program at a later date, and multiple times if you so choose.

To participate in the programs listed below, you will need to call the park office and provide your email address to register. Participants will also need to download the free Zoom app or create an account on the Zoom website for their mobile device or computer. Registered participants will then be sent a Zoom link, which when opened, will take the participant directly to the program meeting. We look forward to providing this new programming experience. We hope you can attend one, or all, of these virtual programs!

**Snowy Owls**  
**Tuesday, December 12 6pm**

**The Ice Age in Crawford County**  
**Tuesday, January 16 6pm**

**Amphibians of Vernal Pools**  
**Tuesday, February 20 6pm**





FALL

FUN!

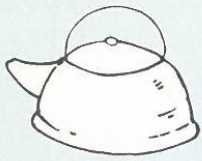








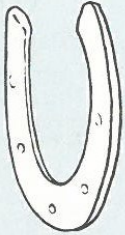
# Winter Storage



teakettle



feather duster



horseshoe



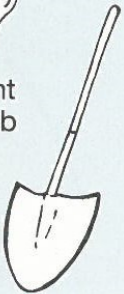
boot



artist's brush



light bulb



shovel



Winter Puzzle is from Highlights: Vol II: 2011



seashell



pie



ice-cream cone



binoculars



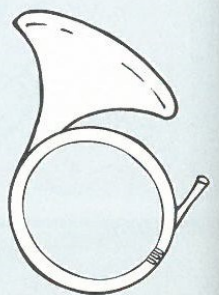
earmuffs



bell



teacup



French horn



safety pin



# Crawford Park Astronomy Club

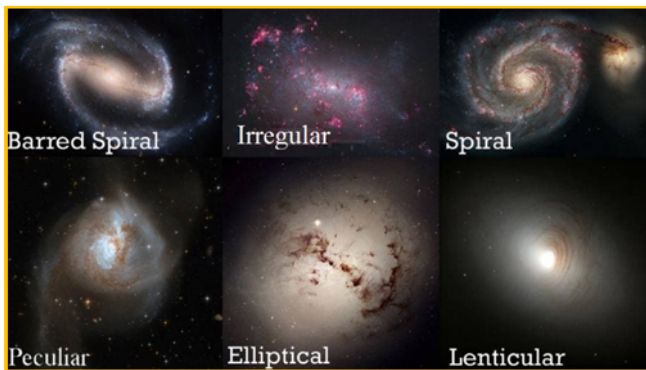
The Astronomy Club will meet on the 4th and 5th Saturday of every month, 30 minutes after sunset. Please dress for the weather. On rainy or cloudy nights, the program will be held in the Lowe-Volk Nature Center.



We are always looking for new members. Winter is coming and you need a new hobby! Or, you can make it a New Year's resolution to get outside more! Now is a great time to join because the winter sky is clearer due to the cooler air temperatures and lower humidity. Also, with the sun setting earlier, the program times start earlier in the evening.

## Galaxies

Galaxies are made up of gas, dust, stars, and dark matter all being held together by gravity. We mostly hear about the Milky Way Galaxy, but did you know that there are billions of other galaxies? Experts think there are between 100-200 billion, but they also think there are billions more just waiting to be discovered. They are classified into different types by their shape and physical features. The 4 main types of galaxies are spiral, elliptical, irregular, and peculiar. The majority of the discovered galaxies, including the Milky Way, are spiral shaped.



**Did you know...** If our sun was the size of a period at the end of a sentence, the earth would be 1" away and be the size of a bacterial cell? The next nearest star would be 4.2 miles away! ☀️ 🌍

WHY COULDN'T THE STAR FOCUS?  
IT KEPT SPACING OUT!

## Meeting Dates



Dec. 23	6:00 pm
Dec. 30	6:00 pm
Jan. 27	6:30 pm
Feb. 24	7:00 pm



## Targets for Winter

- ☞ **Saturn** - beautiful rings, 1 billion miles away, has 146 moons, and Titan is its largest moon.
- ☞ **Jupiter** - has unique cloud bands, ½ billion miles away, and has 4 main large moons out of 95 moons.
- ☞ **Andromeda Galaxy (M31)** - a barred spiral galaxy, our nearest major galactic neighbor, and it's a real treat to view this local galaxy.
- ☞ **Orion Nebula (M42)** - only 1,500 light-years away, birthplace of baby stars, and has an apparent magnitude of 4.
- ☞ **North Star** - also known as Polaris, one of the easiest stars to locate, and is the tail in the constellation of Ursa Minor/Little Bear.
- ☞ **Big Dipper** - part of the constellation Ursa Major/Great Bear, an asterism of 7 bright stars, and the top of the ladle points to the North Star.
- ☞ **Seven Sisters** - also known as Pleiades, a local open cluster of young stars, and only 444 light-years away.

## Full Moons

December 26  
(Cold Moon)

January 25  
(Wolf Moon)

February 24  
(Snow Moon)



## Other Events

Geminids Meteor Shower  
Nov. 19 - Dec. 24  
(Peak: December 13-14)

Ursids Meteor Shower  
December 13-24  
(Peak: December 21-22)

Winter Solstice  
December 22

Quadrantids Meteor Shower  
Dec. 26 - Jan. 16  
(Peak: January 3-4)

# A Spider Surprise

Chelsea Gottfried



Up close, the bolas spider appears to be hugging herself with her hairy legs; her abdomen resembles a mini moldy potato.

It was mid-September, only a few weeks into the start of the school year, when I was heading out to hike the trails of Lowe-Volk Park with my Forest Friends preschoolers. Almost right away, I noticed a peculiarly fresh-looking bird dropping on a dogwood leaf beside the trail. Knowing that a multitude of animals often disguise themselves as avian excrement, I leaned in for a closer look. Surprise!! This bird turd was actually an elusive bolas spider! Now, you may be thinking that a spider resembling bird poop is not much to get excited about, but there is so much more to bolas spiders than their unappetizing appearance.

This particular species turned out to be a Toadlike Bolas Spider (*Mastophora phrynosoma*), and though they are members of the orb-weaving spider family (like Charlotte from *Charlotte's Web*), they employ a much more unusual method of ensnaring their prey. Rather than spinning a traditional web, the bolas spider uses a simpler, more precise hunting strategy. When darkness falls, she attaches herself to the underside of a leaf with silken lines and then lowers a single line of silk terminating in what looks like a raindrop. This super sticky droplet hides a coil of silk within and is also responsible for the bolas spider's name, as it resembles the bolases deployed by Argentinean gauchos. Once her lethal line is ready for action, the bolas spider does something even more outlandish—she begins emitting a chemical scent, or pseudo-pheromone, which mimics the pheromones female moths release to attract a mate. Captivated by this alluring aroma, a male moth flutters in to meet his mate, only to discover that he has been tricked and is on the spider's menu! Sensing the vibrations from the moth's wingbeats, the bolas spider swings her line toward the moth, which is unable to escape the special sticky silk comprising the bolas. Slow motion videos reveal the coiled silken line within the bolas exploding out to entangle the duped male moth, thus cementing its demise.

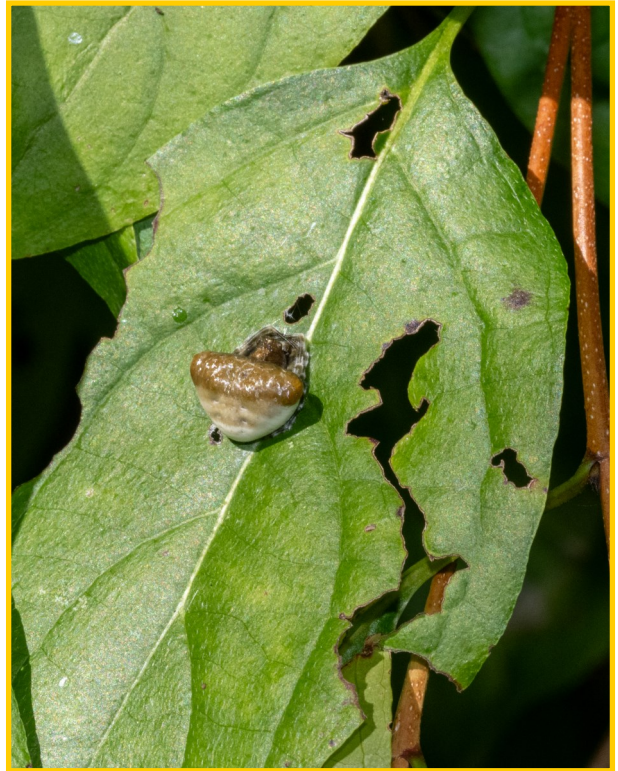


If a moth is not captured after about 30 minutes of waiting, the bolas spider pulls up and consumes her silken lure, promptly replacing it with a fresh one.

Bolas spiders are seldom seen, so of course I had to return to the boardwalk that evening in an attempt to watch her in action. Fortunately, she already had her bolas line deployed when I arrived, and I was ecstatic to witness a moth fluttering ever closer. As if drawn by a magnet, the moth (whose size dwarfed the spider's) flew within inches of the huntress. However, I think the dim light I was using to illuminate the spider tipped the moth off to its presence, and it flew away. Though she missed this meal, she likely had greater success after my departure. After all, on a typical night, a bolas spider snacks on an average of two male moths.



Throughout the following weeks, my preschoolers made a game of who could first spot the “bird poop” spider as we embarked on our routine hikes. Amazingly, during one of these checks, five-year-old Nora managed to locate the bolas spider’s egg sac with her keen eyes. Typical orb-weavers construct a round, whitish silken egg sac to protect their eggs from the elements during harsh winter months. This is not the case with the mama toadlike bolas spider. As a true master of disguise, she fashions an egg case that resembles a shriveled up dead leaf. Though this special spider disappeared in late October, we will be watching for her spiderlings to emerge this spring. Recent research has shown that juvenile and adult male bolas spiders also hunt by means of deception. (Adult male orb-weavers are much smaller than their female counterparts.) Rather than preying on moths, they emit pseudo-pheromones to seduce male moth flies, which make much smaller and more manageable meals. You have likely noticed these flies, also known as drain flies, in bathrooms or inhabiting other damp areas. Occasionally I find one of these flies hanging out around our Nature Center—in the past I promptly disposed of them, but now I leave them to feed the bolas spiders!



Mimicking a bird dropping on a leaf during the day allows a bolas spider to hide in plain sight.



The bolas spider rested on her egg sac for a few days following its careful construction.



**Above:** Five-year-old Nora was thrilled to discover the bolas spider’s egg sac hidden under a leaf!  
**Left:** Adult male and juvenile Toadlike Bolas Spiders specialize on moth flies, like this common one. Instead of deploying a silken “bolas”, they use their forelegs to nab the flies when they swoop within striking distance.



# Unger Park Multi-Use Trail



Unger Park is getting a “trail-lift”! After almost three years in the works, the Unger Park Multi-Use Trail project is underway. Conceived in early 2021, the CPD has partnered with the City of Bucyrus and the Crawford Partnership to develop a multi-use trail within Unger Park. This will be an asphalt trail with a trailhead and parking lot along Bucyrus -Nevada Road, which will accommodate 20 vehicles. The trail will be approximately 1.3 miles in length, connecting Unger Park to Aumiller Park at the Friendship Bridge.



Since this is an active construction site, the west side of Unger Park may look a little “messy” this winter. The multi-use trail will ultimately be an improvement to the quality of life for our community. Please be aware that there may also be trail closures at various times as the clearing and grubbing take place. As with any construction, weather is always a factor. The project is slated for completion by October 2024. Follow the CPD’s Facebook page for updates as the project progresses.

## Nature Camp 2024

Nature Camp registration will open at 8am on Friday, March 1, 2024 and will be online only. The link will be on the homepage of the Crawford Park District’s website, and it will be activated at 8am on March 1, 2024. No in-person or over-the-phone registrations will be accepted until 8am on Monday, March 4, 2024. You will instantly receive an email from JotForm confirming your registration. Within a few business days, you will receive a second email confirming your acceptance into your selected camp week. This email will also have instructions about the camp forms that you need to complete and return to us. Please check your spam/junk folder if you do not receive any emails.

Please plan accordingly as there is no guarantee that camps will not fill up on the first day of online registration. If the week you would like for camp is full, and you would like to be added to the waiting list, please call the CPD office at 419-683-9000.

<u>Ages</u>	<u>Dates</u>	<u>Times</u>	<u>Cost</u>
5-6 Year Olds	June 10 - June 14	9am - Noon	\$75
7-9 Year Olds	June 17 - June 21	9am – 3pm	\$150
7-9 Year Olds	June 24 - June 28	9am – 3pm	\$150
7-9 Year Olds	July 8 - July 12	9am – 3pm	\$150
7-9 Year Olds	July 15 - July 19	9am – 3pm	\$150
10-12 Year Olds	July 22 - July 26	9am – 3pm	\$150
10-12 Year Olds	July 29 - August 2	9am – 3pm	\$150
5-6 Year Olds	August 5 - August 9	9am - Noon	\$75





# Thank you to the following who have donated to the Friends of the Crawford Park District:

August 10, 2023 through November 21, 2023



## **FRIENDS MEMBERSHIPS**

### **Kinglet** (student/senior)

Judy Diederich – In Memory of  
Chuck Diederich  
Gilbert Ross, Jr.  
Phyllis Manley  
Donna Hamilton  
John Witter  
Becky Witter

### **Cardinal** (individual)

Enid Thomas  
Phil & Pat Joseph  
Chuck Tidaback  
Mary Worden  
Don & Dixie Striker  
Janet MacAdam  
Sandy Gearheart – In Memory  
of Kaleb Kenison  
Denise M. Bell – In Memory of  
Richard C. Bell  
Dolores Sweney  
Kenneth Klingelhafer

### **Flock** (family)

Boles Family  
Sandy & Ray Fankhauser  
Jim & Patricia Fruth  
David & Su Rowles  
Sandy Sautter & Family – In  
Memory of Richard Sautter  
Bob & Jill Roberts  
Kevin McKinney  
Janice Gledhill  
Sean & Glenda Leuthold  
Quinn's of Bucyrus LLC  
Jayson Lovelady  
Danny & Sherry Phillip  
Terry & Carol Hubble  
Michael S. Lantz  
Jeanette & Ted Fike  
Dave & Sandra Homer

### **Bur Oak Circle** (supporting)

Greg & Verna Schifer  
Greg & Kim Gabriel  
Jason & Erin Ross  
Jim & Deb Pigman  
Jim & Tammy Patterson

Ken & Deb Cameron  
Village of New Washington  
Jim & Debbie Mayes  
Marvin Kocher – In Memory of  
Barbara Anne Kocher  
Peg Smith  
Sandy Farina  
Jane Ann Miller – In Memory of  
Albert L. Miller  
George & Ann Guins  
Ron & Nancy Cover  
Mike & Suzette Burger

### **Bald Eagle Club** (sustaining)

Joe Kelly  
Don Cover  
Deb Hiler  
Gene & Mendi Toy  
Strohm Family  
Glen & Susan Blackford  
Ken & Chris Berry  
David & Kathy Halsey  
Doug & Kim Beckley  
Marjorie Connors  
Steve & Kathy Krichbaum  
George & Kathy Sheets  
Richard & Loyce Carpenter  
Carle's Bratwurst  
Eric & Shelly Kocher  
Dave & Carol Rowland  
ADM Benefit Plans Agency

### **Tallgrass Prairie Club** (sponsoring)

Rich & Chris Krahlung  
Sarah Hayslip, DVM – In Memory  
of James & Dr. Laurie  
Rhodebeck  
Colonel Crawford Lions Club  
Hord Family Farms  
Lutz Brothers

### **Sycamore Club** (promoting)

Dr. Joe & Sue Shadeed

### **In Memory of Martin McMurray**

David & Brandy Robertson  
Linda M. Ross

### **In Memory of Paulette "Skip" James**

Bill Fisher  
Claudia K Bonen  
Wayne & Deborah James  
Marvin & Kara James  
Anonymous

### **In Memory of Betty Foulk**

Dr. Joseph & Susan Shadeed  
Frank & Margaret Fischer  
Margaret Kime

### **In Memory of Gary Burrer**

Richard & Loyce Carpenter  
Mark, Darlene, & Jason Reed  
Eric & Sharon Barkdull  
Lisle & Julia Chandler  
Falk & Betty Breitmann  
Mark & Louise Sommer

### **In Memory of Russell Badgley**

Russ, Jack, & Linda Kidwell  
Tim Barthalomew  
Ellen Seif  
Susan Snyder & Family  
Jim & Vicki Gray  
Andrew & Kari Gray Family  
Trevor & Mallory Seif Family

### **Other Memorials**

Colonel Crawford Class of '61 – In  
Memory of Ethel Smith  
Denise Rager & James F. Miller – In  
Memory of Pat Miller  
Steve & Kathy Krichbaum – In  
Memory of Daniel Faulkner  
Les & Kathy Dyer – In Memory of  
Ruthie Robinson

### **Other Donations**

Norm & Sharon Huber  
The Kroger Co.  
Roger Scott  
Gary Cole  
The Timken Co.  
Offenburger Orchard

Friends of the Crawford Park District  
 2401 State Route 598  
 Crestline, Ohio 44827  
 419-683-9000

NONPROFIT  
 ORGANIZATION  
 U.S. POSTAGE  
 PAID  
 ZIP CODE 44820  
 PERMIT NO. 10

**Trustees:**  
 Joshua Dyer  
 Martha Kozik  
 Dan Everly  
 Kyle Hartman  
 Barb Koschnick

**Board of Park Commissioners:**  
 Jan Maddy  
 Kyle Hartman  
 Dave Rowland

**Park Staff:**  
 Director — Joshua Dyer  
 Secretary — Patti Schiefer  
 Naturalists — Lisa Bogard,  
                   Chelsea Gottfried, Kaily Vitullo  
 Land Managers — Mike Fruth  
 Program Asst. — Joy Etter-Link  
 Receptionists — Kari Schenz, Patti Gervais

# Trails Newsletter

## Crawford Park District Abbreviated Calendar

### Park/Program Location Key:

LVP (Lowe-Volk Park); V (Virtual); CB (Carpenter's Bottom Natural Area)



Date	Program/Event	Time	Park	Date	Program/Event	Time	Park
Mon. Dec. 4	Feeding Day	4:30pm	LVP	Sat. Jan. 20	Face to Face: Axolotls	11am	LVP
Tues. Dec. 5	Little Explorers: Bones	5pm	LVP	Mon. Jan. 22	Feeding Day	4:30pm	LVP
Thurs. Dec. 7	Homeschool: Telemetry	10am & 2pm	LVP	Sat. Jan. 27	Viewing the Night Sky	6:30pm	LVP
Sat. Dec. 9	Holiday Decorations	11am	LVP	Thurs. Feb. 1	Homeschool: Nature Knowledge	10am & 2pm	LVP
Tues. Dec. 12	Snowy Owls (Virtual)	6pm	V	Sat. Feb. 3	Surreal Snapshots: Photography	11am	LVP
Fri. Dec. 15	Movie in the Park	6pm	LVP	Feb. 3 - Mar. 2	Photography Exhibit	All day	LVP
Mon. Dec. 18	Rockin' Reindeer	5:30pm	LVP	Sat. Feb. 3	Ohio Birding	1pm	LVP
Sat. Dec. 23	Viewing the Night Sky	6pm	LVP	Mon. Feb. 5	Feeding Day	4:30pm	LVP
Fri. Dec. 29	Audubon Christmas Bird Count	7:30am	LVP	Tues. Feb. 6	Little Explorers: Feathers	5pm	LVP
Sat. Dec. 30	Face to Face: Lizards	11am	LVP	Sat. Feb. 10	Rock Tumbling	10am-12pm	LVP
Sat. Dec. 30	Viewing the Night Sky	6pm	LVP	Sat. Feb. 10	Explore Carpenter's Bottom	1pm	CB
Mon. Jan. 1	Feeding Day	4:30pm	LVP	Sat. Feb. 17	Face to Face: Snakes	11am	LVP
Tues. Jan. 2	Little Explorers: Snow	5pm	LVP	Tues. Feb. 20	Amphibians of Vernal Pools (Virtual)	6pm	V
Thurs. Jan. 4	Homeschool: Wildlife Timeline	10am & 2pm	LVP	Sat. Feb. 24	Rock Tumbling	10am-12pm	LVP
Thurs. Jan. 4	Tracks in the Trails	4pm	LVP	Sat. Feb. 24	Viewing the Night Sky	7pm	LVP
Wed. Jan. 10	Frozen Critters	5:30pm	LVP	Sun. Feb. 25	Snow Insects	2pm	LVP
Tues. Jan. 16	Crawford County Ice Age (Virtual)	6pm	V	Wed. Feb. 28	Nature's Best Leapers	5:30pm	LVP